

PURCHASE RECORD

Model #: _____
Serial #: _____
Date of Purchase: _____
Purchased From: _____
Company: _____
Address: _____
City _____ State _____ Zip Code _____
Telephone #: _____

Each AMSEC safe is professionally hand-crafted with quality materials and is equipped with a precision-quality, high-security combination lock. To become familiar with the lock, operate the lock (as outlined below) several times before closing the door and locking the safe.

Operation Instructions:

- Don't spin, force or make abrupt stops with the combination dial. A combination lock is a precision instrument and can be damaged by abuse which leads to a costly "lockout."
- Don't slam the door. Extreme shock can damage the lock or jam the boltwork.
- Don't shut the door with the boltwork in the locked position. Damage to the boltwork and marring the safe's finish may result.
- Don't stack contents of the safe so that the door must be forced shut. Jamming of the boltwork may result.
- Don't store the combination card inside the safe.
- Don't use oil, grease or any other lubricant on the combination lock.
- Dial the combination slowly and exactly to the number looking straight at the dial. Use your thumb as a brake to avoid passing the number.
- Restart the dialing sequence if you pass a number, it is required to dial the combination within a 1/2 number, in order to open the lock.
- Dial the numbers to the bold, highlighted or framed mark at the 12 o'clock position on the dial ring. The other mark is for servicing the lock which should only be done by a qualified locksmith.
- Always lock the boltwork and scramble the combination when you are finished using the safe.
- Keep all moving parts clean and free from obstruction, water and grease.
- If you experience a difference in the feel of the operation, inconsistency or difficulty opening or operating the safe, DO NOT LOCK THE SAFE. Immediately contact the security store from whom you purchased the safe. If this is not practical, contact the AMSEC service department at 951-685-9680, Ext. 1036.

CAUTION FIRE SAFE CONTENT STORAGE

A fire safe contains insulation material, which may cause humidity to be present when closed extended periods of time. It is recommended that the safe is opened on a regular basis and interior allowed to air out. It is also recommended that documents sensitive to moisture be kept in a sealed container, I.E Ziplock® or Tupperware®.

MAINTENANCE

Standard Textured finish: Your safe is provided with a durable paint that may be easily cleaned with a mild detergent and a soft cloth. **Do Not** use abrasive scouring pads or any chemical fluids, which may react and damage the finish.

Hi-Gloss Finish: This finish is a two-stage paint, which is the same used in the automotive industry. Use a damp cloth with mild detergent if needed. A good grade of automotive wax is recommended if the finish appear dull. **Do Not** use abrasive scouring pads or any chemical fluids, which may react and damage the finish.

Door Operating Mechanism: The handle of the safe moves mechanical parts inside the door. After a period of use, if difficulty is experienced in operation, please contact a qualified locksmith for service.

Door Hinges: If the door becomes hard to open or emits noise, the hinges may need lubrication. Please contact a qualified locksmith for service.

Caution: AMSEC assumes no liability for finish damage due to the incorrect use of caustic lubricants.

Mechanical Combination Locks: Mechanical combination locks will perform well for the life of the safe when operated correctly. Occasionally, they may need to be cleaned and adjusted if dialing the combination becomes difficult. When this is experienced, contact a qualified locksmith for service. Attempting to service a combination lock yourself will void the warranty and may result in a malfunction and require your safe to be drilled.

DAMAGE CLAIMS

Freight Damage: All safes are carefully packed for shipment. The manufacturer's liability ceases when the transportation carrier accepts the shipment in good condition. The carrier's liability ceases when you sign for the merchandise. **INSPECT YOUR SHIPMENT BEFORE SIGNING THE DELIVERY RECEIPT.** Although unlikely, if damage occurs you have the option of refusing the shipment or negotiating a settlement with the carrier. To negotiate a settlement follow these steps:

1. Note the extent of the damage on the freight bill and sign your name.
2. Save all cartons and packaging materials.
3. Call the freight carrier immediately and request a damage inspection claim.

All Claims:

1. Contact your dealer immediately.
2. Claims must be filed within 15 days.
3. Claims must be accompanied by proof of purchase receipt and photographs.
4. In the event of replacement, the safe must be returned to the dealer/factory in the original packaging.

Limited Product Warranty

LIMITED WARRANTY—SECURITY SAFES & ELECTRONIC PRODUCTS

Product Category **Duration of Warranty**
(Beginning from date of first consumer purchase / Proof of purchase necessary)

All Safes and related components 1 Year Parts & Labor
Electronic Locks and related components 1 Year Parts & Labor

Special Extended Warranty / Product Category
(See special coverage guidelines enclosed for each product category)

TF & SF Series Gun Safes Only 1 Year Parts & Labor—Lifetime Free Replacement

What is covered and what is not covered:

This warranty covers all defects in materials or workmanship in this product, but DOES NOT COVER:

- (1) Damage, deterioration or malfunction resulting from:
 - a. Accident, negligence, misuse, abuse, improper installation, failure to perform normal maintenance or operation to follow instructions labeled on or provided in the safe.
 - b. Any damage occurred from shipment. (Claims must be presented to the carrier)
 - c. Repair or attempted repair by anyone other than a pre-authorized AMSEC service dealer.
- (2) Any unit which has been altered or on which the serial number has been defaced, modified or removed.
- (3) Normal wear, battery replacement, any periodic maintenance or where combination lock has been changed without factory authorization.

Who may enforce the warranty:

This warranty is only enforceable by the original purchaser.

What we will pay for and what you must pay for:

AMSEC will repair or replace units covered by this warranty, without charge to the consumer for labor and materials. **YOU ARE RESPONSIBLE FOR ANY INSTALLATION OR REMOVAL CHARGES AND FOR ANY SHIPPING CHARGES.** State sales tax does not apply to warranty service work and will not be honored. If safe components must be shipped for warranty service, AMSEC will pay the shipping charges to any destination within the USA if the repairs are covered by the warranty. Defective parts must be returned (not repaired unless instructed) to AMSEC. If parts are not returned, the warranty invoice will be denied.

How you can get warranty service:

- (1) If your AMSEC safe requires service, contact your local authorized AMSEC dealer and the dealer will advise you of the procedures to be followed. If this is not practical, contact the AMSEC Service Department at the address on front cover or call 951-685-9680, ex. #1036.
- (2) All warranty service must have prior authorization, accompanied by proof of purchase as evidence of warranty coverage. A warranty authorization number must be obtained from AMSEC before any service work is performed. The serial number, description of product and description of problem must be supplied to AMSEC to determine warranty status before an authorization number will be assigned. Issuance of the authorization number recognizes only the existence of the problem and does not constitute an admission of liability by AMSEC. Only approved service representatives will be authorized to perform warranty service. Any service performed prior to issuance of a warranty authorization number will be subject to denial.

Limitation of Implied Warranties:

Any implied warranties, including warranties of merchantability and fitness for a particular purpose, are limited in duration to the length of this warranty.

Exclusions of Damages:

AMSEC's liability for any defective products is limited to repair or replacement of the product, at our option.

AMSEC shall not be liable for damages based upon inconvenience, loss of use, damage or loss of contents, or any other damages whether incidental, consequential or otherwise.

Special Extended Product Warranty

Gun Safe Lifetime Warranty

If you are the original owner of an AMSEC gun safe that suffers damage due to theft or fire, provide us with a properly filed police report, within 30 days. With absolutely no cost to you, which means: free parts, free labor and free freight; we will either replace or repair (our option) with a current production model of comparable value. For additional assistance, please contact your local dealer. We will be standing by ready to take immediate action to get your valuables quickly secured back in a quality-built AMSEC safe.

No Cost - Break-in Warranty

If your AMSEC gun safe is forcibly entered, we will replace or repair it, free of charge.

No Cost - Attempted Break-in Warranty

If your AMSEC gun safe has been subjected to a drill, punch or pry attack and has performed successfully by keeping intruders out, it will be repaired or replaced free of charge.

No Cost - Fire Warranty

If your AMSEC gun safe has been subjected to a home fire, it will be repaired or replaced free of charge.

American Security's Gun Safe Warranty commitment to you: We will fix the safe in your home if at all possible, we will pay for the safe technician to open the safe, we will pay for the safe technician to repair the safe and if a repair is not possible within the home, we will pay for the freight back to the factory.

Gun Safe Warranty effective on Gun Safe purchases starting 01/01/2006

SAFE COMBINATION INSTRUCTIONS

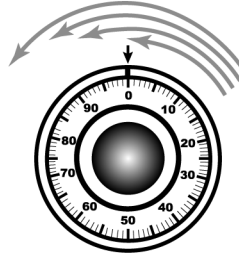
1st NUMBER (4 TIMES LEFT)	
2nd NUMBER (3 TIMES RIGHT)	
3rd NUMBER (2 TIME LEFT)	

Important:

Turn dial slowly and evenly. Do not turn back to regain alignment if you rotate past number. If an error is made, re-dial entire combination. DO NOT count turns. Count how many times each number is aligned with the opening index (at the 12 o'clock position). Always view the dial and ring straight on, not at an angle.

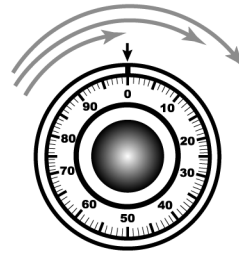
Step 1.

Turn dial left, aligning first number with the opening index the fourth time it comes to the index.



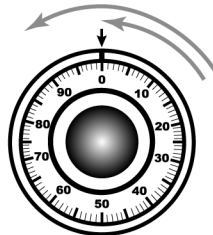
Step 2.

Turn dial right, aligning second number with the opening index the third time it comes to the index.



Step 3.

Turn dial left aligning third number with the opening index the second time it comes to the index.



Step 4.

Turn dial right until the bolt retracts.

To lock: Close the door, turn the key to the locked position, remove the key and turn the dial 4 complete turns.

The serial number of your safe

is listed below. If you lose the combination, or need service on your safe, you can use the serial number as a reference. Please keep the combination in a safe place, away from your safe.

SERIAL#

Important Operating Instructions and Warranty Information On Your New AMSEC Safe

MODELS:

SF5924, SF6032, SF6030, SF6036, TF5924, TF6032, TF6030, TF6036
FS2215, FS3018, FS4622

Read Contents Carefully For Trouble-Free Operation of Your Safe

Dear Valued Customer:

Congratulations on your purchase of the finest safe from American Security Products, Co.

You've taken an important step in organizing and protecting your most valued possessions. Every AMSEC safe is professionally hand-crafted and designed to provide a lifetime of trouble-free performance.

AMSEC offers the industry's finest warranty backed by a nationwide network of highly skilled authorized dealers, providing prompt, courteous, and professional service. We suggest that you read the Limited Warranty thoroughly, and invite you to contact your authorized AMSEC dealer or AMSEC's Service Department if you have any questions.

Please also take the time to read and familiarize yourself with the proper operating procedures of your new safe presented on the following pages.

Again, Congratulations and Thank You for selecting AMSEC!

If you like us to send AMSEC Safe information to a friend or have any questions concerning our complete line of security products, please send your request to:



**AMERICAN SECURITY
PRODUCTS COMPANY**
11925 Pacific Avenue
Fontana, California 92337
Visit us on the web at:
www.amsecusa.com

Part# 4305245